

MLS #: C902540A List Price: \$385,000

10 Industrial Blvd Camilla, GA 31730



CURRENT BUSINESS TYPE: Professional
Offices, Warehouse
DESIGN:
APX SQFT: 16000
UNITS: 0
FLOORS: 2
PRIVATE BATHROOMS: 4
PUBLIC BATHROOMS: 1
APX YEAR BUILT: 0
PARKING: Dirt Lot, Paved

UNIT #:
MAIN AREA: Camilla
COUNTY: Mitchell County
ZONING: C-3

LOT DIMENSIONS:
DEED BOOK/PAGE:
INCORPORATED AREA:
CITY TAXES:
IMPROVEMENT VALUE:

APX TOTAL ACREAGE: 1.1
PLAT BOOK/PAGE:
USE CONFORMS TO ZONING:
COUNTY TAXES:
LAND VALUE:

LOTS:
FRONTAGE:
INDUSTRIAL PARK:
TAX YEAR:
YEARLY ASSOC FEE:

UTILITIES:
MECHANICAL FEATURES:
ELECTRICITY:
SITE:

ENVIRONMENTAL:

OFFICE SQFT: 0 **WAREHOUSE SQFT:** 0 **STORAGE SQFT:** 0 **APX SHOWROOM SQFT:** 0 **CEILING HEIGHT:**
INTERIOR FEATURES: Breakroom, Ceiling Fan(s), Drive-in Door, Office Space, Private Restrooms, Warehouse

EXTERIOR FINISH:
GENERAL FEATURES: High Traffic Area, High Visibility, Industrial Area
FLOORING:
ROOF:

EXTERIOR FEATURES:
ACCESS: US Highway
SALE INCLUDES:
CONDITION:

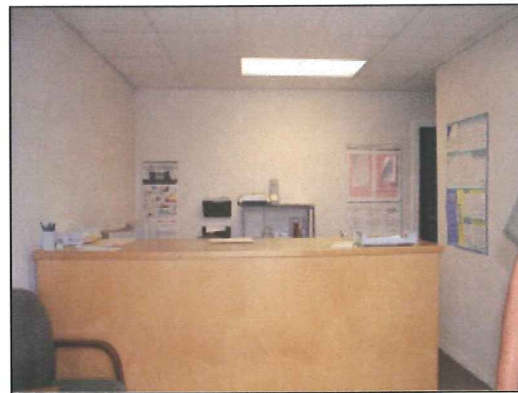
DIRECTIONS: From Thomasville, Go north on HWY 19. Turn left at Kangaroo gas station in Camilla onto Industrial Blvd. Property on right.

PUBLIC REMARKS: Property is on the corner of Industrial Blvd and HWY 19 in Camilla. Large warehouses and total of 7 offices and two reception areas. Illuminated sign on HWY 19. Each individual sign is rented out. Some of the warehouse and office space is currently rented out for a total of \$2235 per month. Many more offices available to rent out to potential customers. LOTS of heavy traffic on HWY 19 and Industrial Blvd.

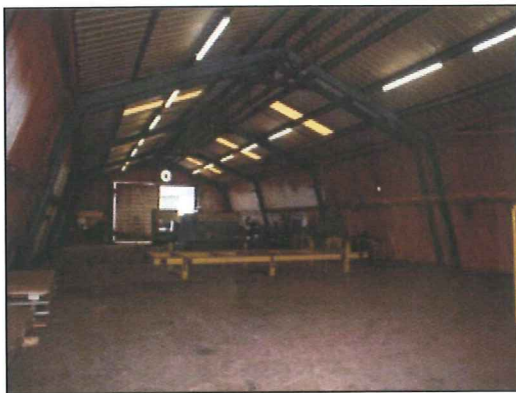
C902540A



Sign



Reception



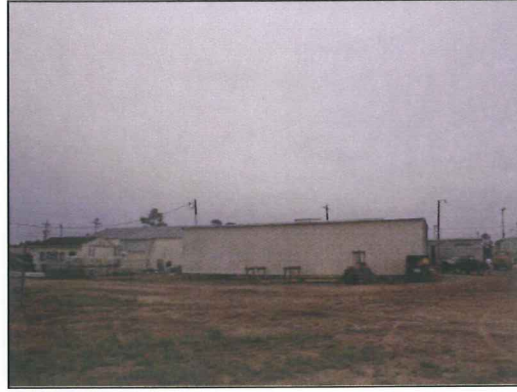
Warehouse



Warehouse 2



Warehouse 3



Outside



Outside 2



Office



Bathroom



Kitchen