

**MEAT PROCESSING PLANT – 10,587 Sq. Ft.
MITCHELL COUNTY GEORGIA**



306 West Broad Street, Camilla

Located on Georgia Hwy 37, just off U.S. Hwy. 19, a major 4 lane, this 10,587 sq. ft. building's location offers easy access to I-75 & I-10. Building is situated on 3 acres with sufficient acreage for expansion and ample parking. Building has a 20' x 34' freezer and a 20'x63' and 20'x54' cooler. The property is zoned I-2 Heavy Industrial. *Additions to the building were made in 1960, 70', 1980.

BUILDING INFORMATION

Building Size	10,587 Sq. ft.	Fire Insurance Rating	6
Expansion Potential	Yes	Year Built	1948*
Type	Single Tenant	Lot Acreage	3 acres
Lot Expansion Potential		Expansion Size	
Ceiling Height (Min./Max.)	12'	Office Area	525 & 620 sq. ft.
Parking Spaces	20+	Construction Material	Masonry/Metal
Truck Doors		Floor Thickness	

SPECIAL FEATURES

Railroad Doors	no	Freezer	20'x34'	Crane(s)	None
Production Area A/C	yes	Cooler	20'x63' & 54'	Boiler	no
Insulated	yes	Sprinkler	yes	Zoned	I-2 Heavy Industrial

UTILITIES

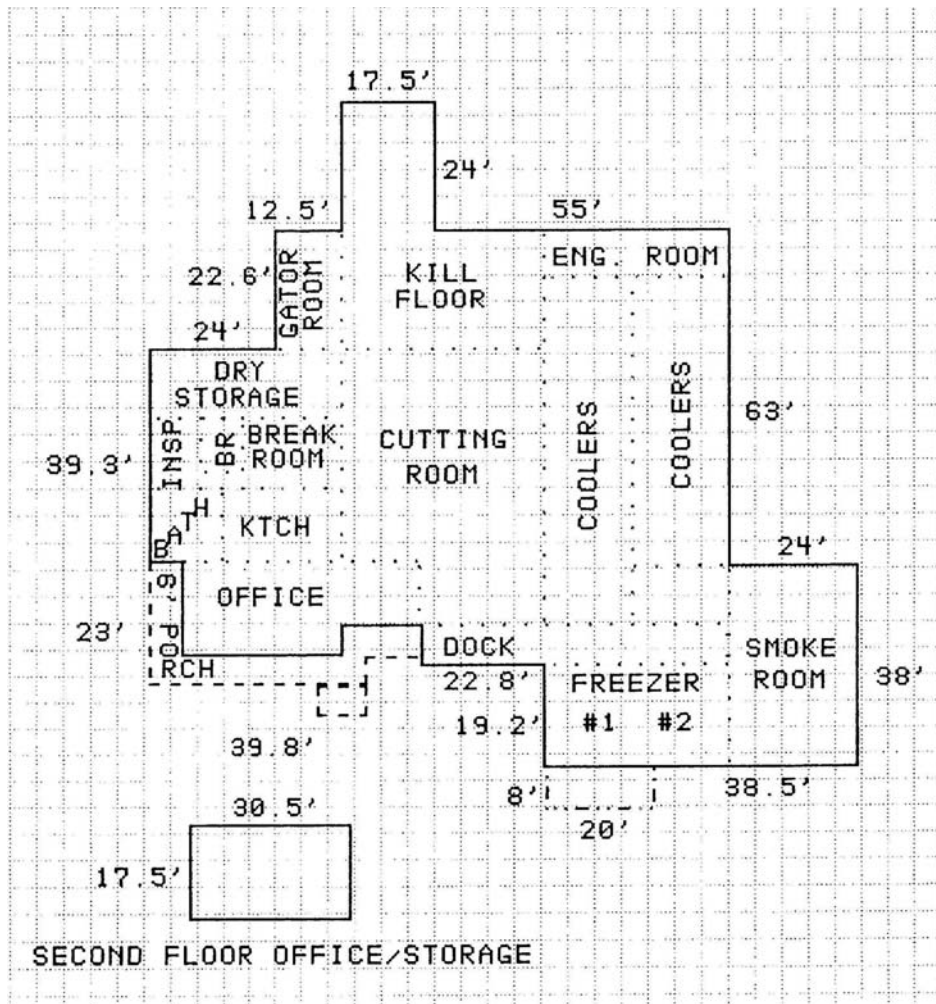
	<u>Provider</u>	<u>Main Size</u>
Sewer	City of Camilla	10"
Gas	City of Camilla	2"
Water	City of Camilla	6"
Electricity	MEAG	
Technology	CNS/ AT&T DSL	

CONTACT: MITCHELL COUNTY DEVELOPMENT AUTHORITY

Marilyn Royal
Post Office Box 692
Camilla, Georgia 31730

mroyal@mitchellcountyga.net
www.mitchellcountyga.net

(229) 336-2061
Fax (229) 336-2063



Floor Plan of Meat Processing Plant Building



Close-up of front of Meat Processing Plant Building