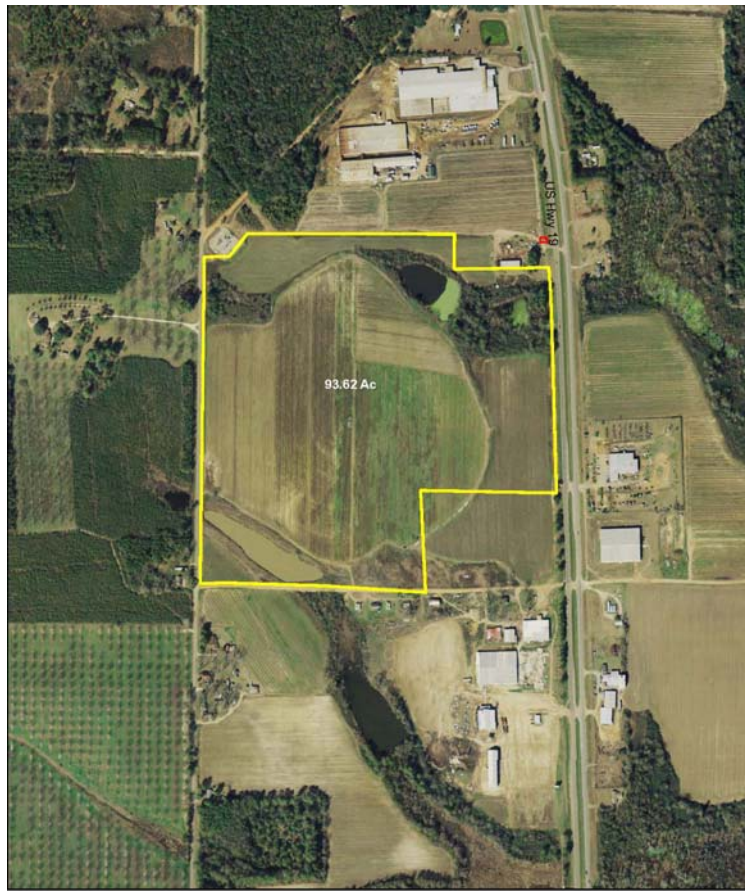


# MITCHELL COUNTY INDUSTRIAL PARK II – 93 Acres MITCHELL COUNTY, GEORGIA



## **Industrial Park Sites on US Hwy 19, North of Pelham**

93 acre County owned park with all infrastructure in place. Located on U.S. Hwy. 19 an excellent transportation corridor with direct access to I-75 & I-10. This property is within one days freight travel to a population of 55,339,013 in the Southeastern United States. The site also offers the advantage of being located within a mile of First United Ethanol; the Southeast's first 100 million gallon corn based Ethanol plant. This site is ready to develop.

### **Park Features**

<b>Lot Acreage</b>	93 ACRES	<b>Fire Insurance Rating</b>	6
<b>Lot Expansion Potential</b>	YES	<b>Expansion Size</b>	
<b>Railroad</b>	NO	<b>Zoned</b>	I-Industrial

### **Utilities**

	<b><u>Provider</u></b>	<b><u>Main Size</u></b>
<b>Sewer</b>	City of Pelham	
<b>Gas</b>	City of Pelham	
<b>Water</b>	City of Pelham	
<b>Electricity</b>	GA Power, EMC	
<b>Technology</b>	CNS/ AT&T DSL	

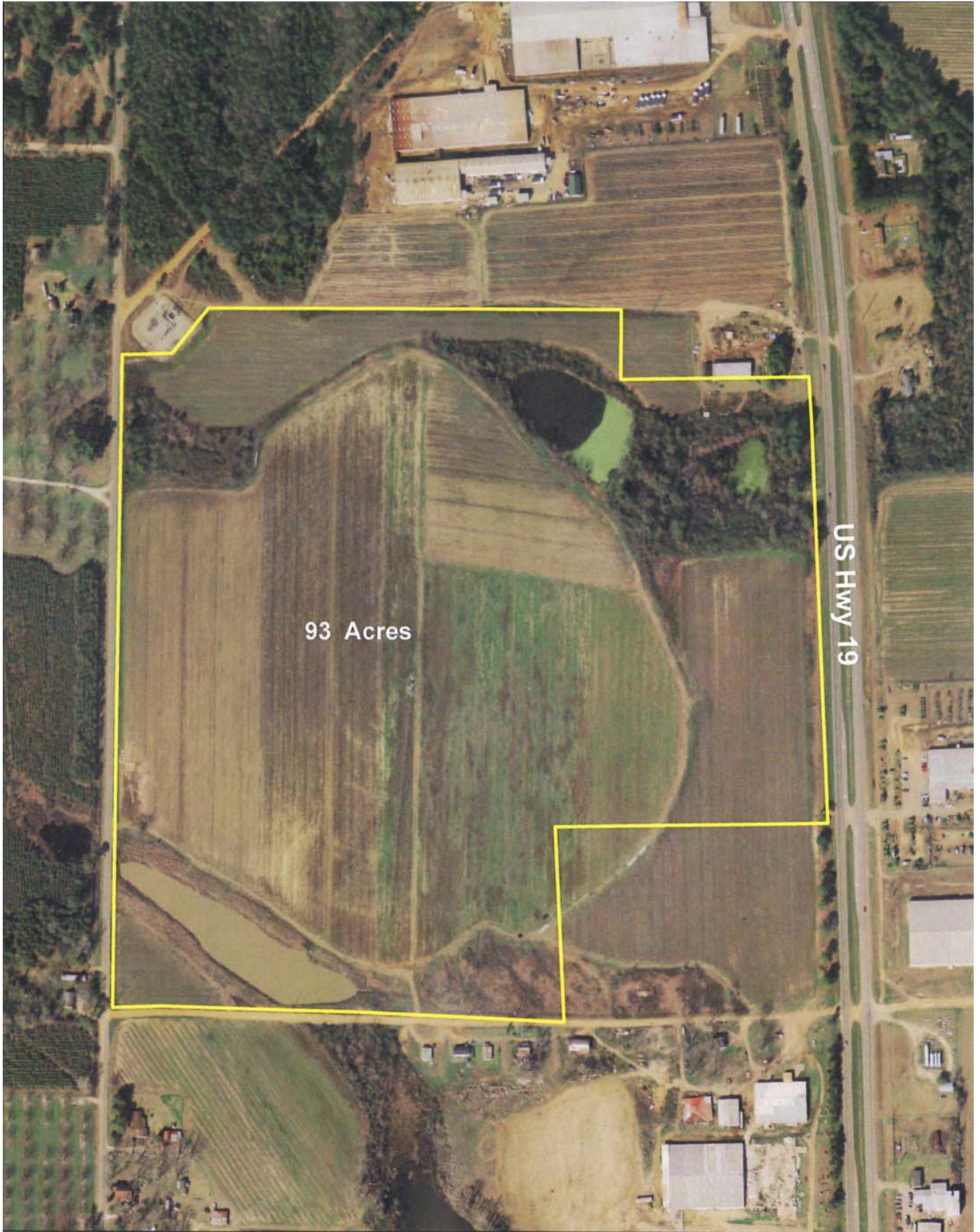
### **CONTACT: MITCHELL COUNTY DEVELOPMENT AUTHORITY**

**Marilyn Royal**

Post Office Box 692  
Camilla, Georgia 31730

mroyal@mitchellcountyga.net  
www.mitchellcountyga.net

(229) 336-2061  
Fax (229) 336-2063



Mitchell County Industrial Park II - 93 Acres

